

## Test Report

**Date:** 02/14/2018

**Attn:** Michael Applewhite

**Type of Test:** Egg shell surface sanitation with SaniDate Sanitizing Wipes.

### **Test Method(s) and Material(s):**

Using sterile cotton swabs, swab samples were collected from egg shell surfaces (Eggs collected from commercial hatchery) received to BioSafe Systems Laboratory before and after wiping with SaniDate Sanitizing Wipes (Fig. 1) and analyzed for microbial population.

Figure 1. Sanitizing Egg Shells with SaniDate Sanitizing Wipes (Left); Swab samples collected from Egg Shells before and after wiping (Right).



**Number of Eggs received:** 6

### **Type of Microbial Analyses conducted on samples:**

Total Aerobic Bacteria/Aerobic Plate Count (APC) in CFU/swab (Total: Includes Pathogenic and/or Non-Pathogenic)

Total Coliforms and *E. coli* in CFU/swab

**Test Method(s):** Standard microbial analysis procedures developed to enumerate Total Aerobic Bacteria/Aerobic Plate Count (APC), Total Coliforms and *E. coli* were used to perform the tests.

**Test Results:**

Results of microbial analysis of Eggs samples are presented in Table 1; Fig.1.

**Table 1. Microbial Analyses of Swab Samples collected from Egg Shell surfaces**

Egg sample	Designation	APC <sup>a</sup> /Swab	Coliforms <sup>b</sup> /Swab	<i>E. coli</i> <sup>b</sup> /Swab
1	Before Treatment	4,350	0	0
	After Treatment	0	0	0
2	Before Treatment	12,150	0	0
	After Treatment	150	0	0
3	Before Treatment	31,950	0	0
	After Treatment	0	0	0
4	Before Treatment	91,500	0	0
	After Treatment	2,100	0	0
5	Before Treatment	4,800	0	0
	After Treatment	150	0	0
6	Before Treatment	13,650	0	0
	After Treatment	150	0	0

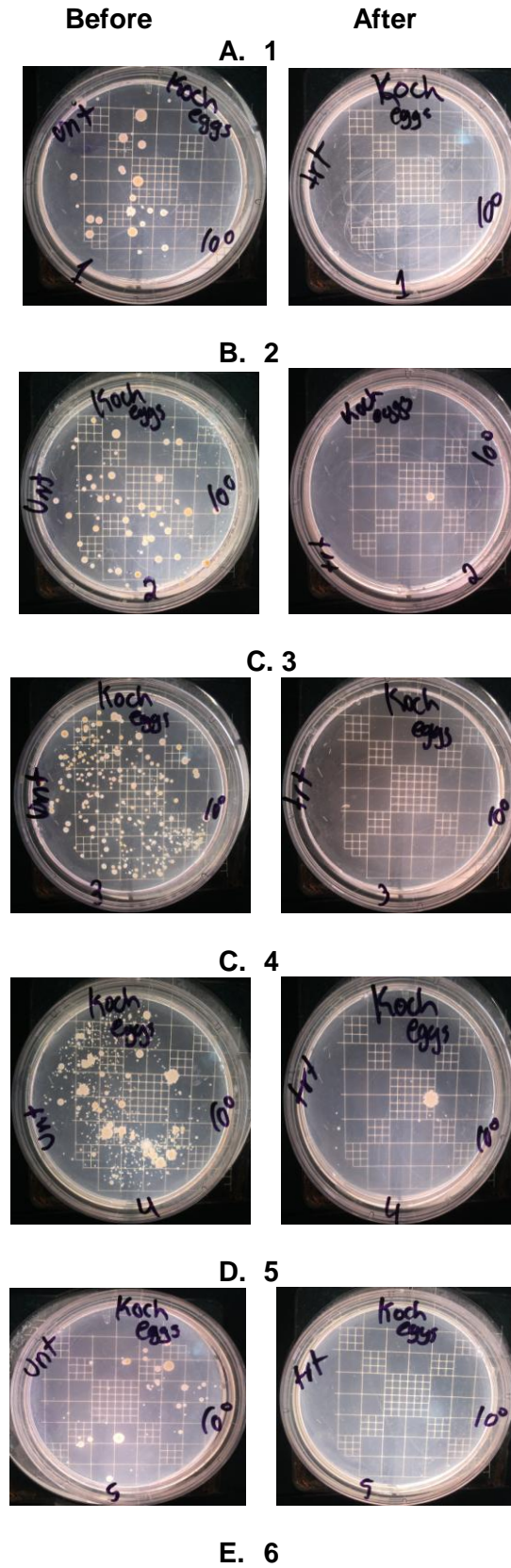
<sup>a</sup> APC=Aerobic Plate Count-Growth on Standard Methods Agar

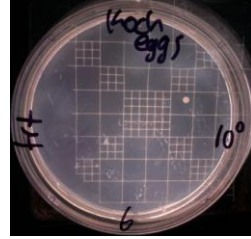
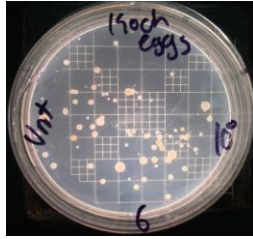
<sup>b</sup> Growth on CHROM Agar

**Table 2. Average Reduction in APC on Egg Shells after treatment with SaniDate Sanitizing Wipes**

Designation	Average
	APC /Swab
Before Treatment	158,400
After Treatment	2,550
% Reduction	98.39%

Figure 2. Total Aerobic Bacteria from swabs collected before and after SaniDate RTU Wipes treatment





**Report Prepared By:**

**Vijay Kumar Choppakatla, Ph.D**  
Plant Pathologist

**BiSafe Systems**<sub>LLC</sub>

22 Meadow Street, East Hartford, CT 06108  
Phone 860.290.8890 ext. 221 | Toll Free 888.273.3088  
Fax 860.290.8802 | Web [biosafesystems.com](http://biosafesystems.com)