

IMPORTANT - LID ATTACHMENT AND REMOVAL INSTRUCTIONS

PLEASE READ CAREFULLY BEFORE REMOVING LID

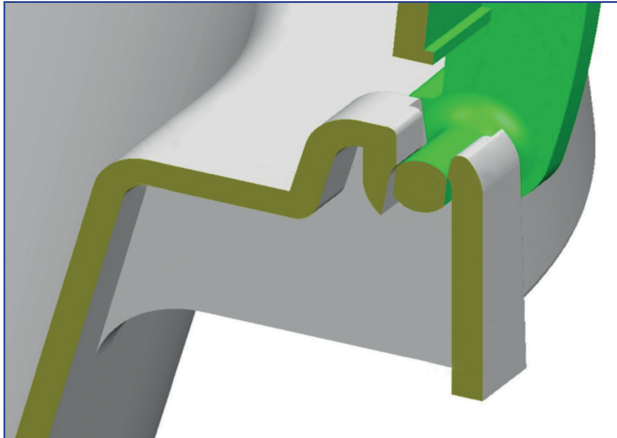


Figure 1: Cross section of hinge system

The hinge system is designed to allow the lid to be removed without damage. The lid has hinge pins with flat surfaces (fig. 1) which allow them to pass through the gap in the Footbath base only when the lid is in the **VERTICAL** position as indicated.

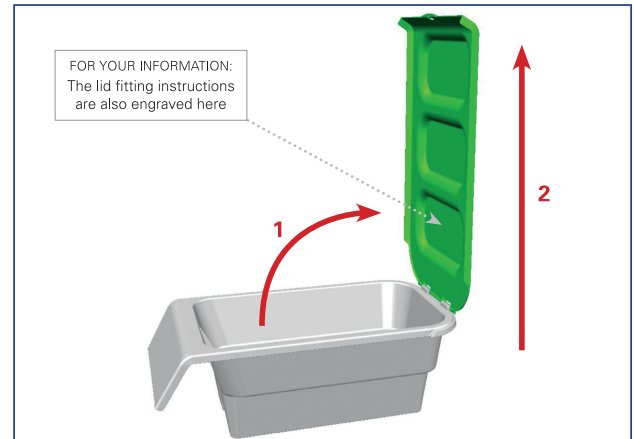


Figure 2: To remove the lid raise the lid as indicated (1) and lift the lid (2)

The Lid should only be **fitted** and **removed** in this position:
 (90 degrees from closed).

For further details please contact us on 01664 560746, alternatively
Email: enquiries@hysolv-footcheck.com • Website: www.hysolv-footcheck.com



IMPORTANT - LID ATTACHMENT AND REMOVAL INSTRUCTIONS

PLEASE READ CAREFULLY BEFORE REMOVING LID

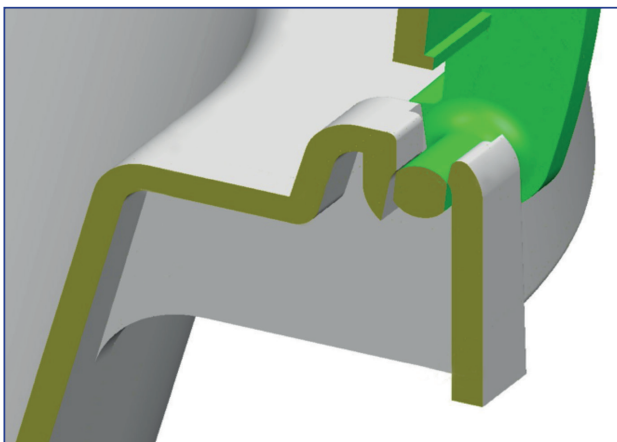


Figure 1: Cross section of hinge system

The hinge system is designed to allow the lid to be removed without damage. The lid has hinge pins with flat surfaces (fig. 1) which allow them to pass through the gap in the Footbath base only when the lid is in the **VERTICAL** position as indicated.

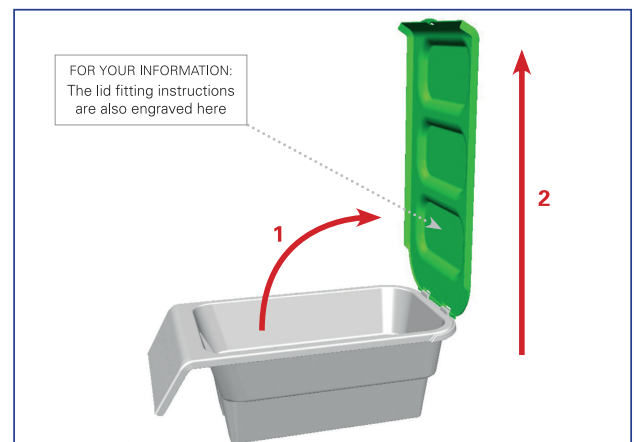


Figure 2: To remove the lid raise the lid as indicated (1) and lift the lid (2)

The Lid should only be **fitted** and **removed** in this position:
 (90 degrees from closed).

For further details please contact us on 01664 560746, alternatively
Email: enquiries@hysolv-footcheck.com • Website: www.hysolv-footcheck.com

